

# Tidings

766 Graceland Ave.

Des Plaines, IL 60016



**April 2025 - Vol. 86 – No. 4**

*Living Our Faith Through Service*

---

## Maundy Whatchamacallit?

Ever wondered why some churches refer to "Holy Thursday," while others call it "Maundy Thursday"? The word *maundy* might seem like a mystery, and you're not alone if you've ever been baffled by the "maundyness" of the occasion.

The term *maundy* comes from the Latin *mandatum*, meaning "commandment." It refers to Jesus' words to his disciples on their final evening together, as recorded in the Gospel of John:

*"A new commandment I give you, that you love one another. Just as I have loved you, you should love one another. By this, everyone will know that you are my disciples, if you have love for one another."* (John 13:34-35)

While Maundy Thursday is often remembered as the night of the Last Supper, the Gospel of John doesn't include an account of Jesus instituting the Eucharist. Unlike Matthew, Mark, and Luke, which describe Jesus sharing bread and wine, John focuses instead on Jesus washing the disciples' feet—an act of humility and love that embodies his new commandment. To this day, the image of a water basin and towel remains a powerful symbol of servanthood and discipleship.

Maundy Thursday services often include Holy Communion, foot washing, or both. At our church, we observe this solemn night with a **Tenebrae Service**, featuring readings and the gradual extinguishing of candles. The growing darkness represents both the suffering of Christ and the pain of our world. As a reflection of this sacred moment, our bulletin includes this request:

*"For the greatest helpfulness, the rule of silence should be observed throughout this service and upon leaving the sanctuary and church grounds. Please do not greet one another except in silent recognition."*

With the close of this service, we enter the Easter Triduum—the sacred “three days” leading to Easter. Many churches strip the altar or chancel area at the end of the service, leaving it bare through Good Friday and Holy Saturday. Then, on Easter morning, the space is transformed, adorned with white and gold to celebrate Christ’s resurrection.

By the way... you are warmly invited to join us for our **Maundy Thursday worship service at 7:00pm on April 17.**

**With love,**

*Rev. Co*

# Worship Ministry

**April 6**

**Fifth Sunday in Lent/Communion/Brunch**

Service of Worship	9:00a – <a href="http://www.fccdp.org">www.fccdp.org</a>
Fellowship	10:00a
Lay Reader	Sharon Urry
Scripture Reading	Philippians 3:4b-14

**April 13**

**Palm Sunday/Easter Egg Hunt**

Service of Worship	9:00a - <a href="http://www.fccdp.org">www.fccdp.org</a>
Fellowship	10:00a
Lay Reader	Cindie Hoch
Scripture Reading	Philippians 2:5-11

**April 20**

**Easter Sunday**

Service of Worship	9:00p - <a href="http://www.fccdp.org">www.fccdp.org</a>
Fellowship (no potluck)	10:00a
Lay Reader	Ellen Alde
Scripture Reading	Acts 10:34-43

**April 27**

Service of Worship	9:00a - <a href="http://www.fccdp.org">www.fccdp.org</a>
Fellowship	10:00a
Lay Reader	Confirmands
Scripture Reading	Acts 5:27-32

***Please join us for our Maundy Thursday worshiip service at 7:00pm on Thursday, April 17***

## Children's & Adult Education Ministry

### Can You Help the Easter Bunny?

Our annual Easter Egg Hunt is scheduled for Sunday, April 13 after the worship service. The Easter Bunny has requested a donation of empty plastic eggs this year, to ensure that **lots** of treats can be hidden on the playground. If you can help, please bring your plastic egg donation to church on Sunday morning or leave it in Rev. Co's office between 9:00am and 1:00pm during the weeks. Thanks in advance for your help!

FIRST CONGREGATIONAL CHURCH  
766 GRACELAND AVE, DES PLAINES



# EASTER EGG HUNT

**PALM SUNDAY, APRIL 13TH**

EVERYONE HAS AN OPPORTUNITY TO FIND EGGS  
AND TAKE PHOTOS WITH THE EASTER BUNNY AT  
OUR ALL-FAMILY EVENT HELD IN A FENCED  
PLAYGROUND AREA.  
PLEASE BRING A BASKET OR BAG FOR EACH CHILD.  
THE FIRST 50 FAMILIES WILL RECEIVE A FREE  
REUSABLE TOTE BAG!

**FREE EVENT**  
**REGISTRATION NOT REQUIRED**  
IN CASE OF INCLEMENT WEATHER,  
THE HUNT WILL BE HELD INDOORS.

**EGG HUNT TIMES BY AGE:**  
**PRESCHOOL & UNDER: 10AM**  
**GRADES K,1&2: 10:15AM**  
**GRADES 3,4&5: 10:30AM**

Visit [fccdp.org](http://fccdp.org) or  
call 847-299-5561 for more info



# Membership & Communications Ministry

## What is MAC?

What is MAC? Officially as stated in the church constitution:

Membership and Communications Ministry

- a. The Ministry shall communicate church events and programs, orientate new and potential church members, cultivate and assimilate new and potential church members and track present membership.
- b. The Ministry shall stimulate and promote fellowship among all members through a program of church-sponsored activities.
- c. The Ministry shall take on other special responsibilities generally related to church communications and church membership.
- d. The Coordinator of Membership and Communications shall be a non-voting member ex-officio.

Sounds pretty boring. But what does MAC really do? MAC functions more like your high school social committee. We try to find fun, engaging, multi-generational activities that will bring our church family together for a few hours of quality together time several times a month. Ideally these activities will draw dis-engaged members back to church as well as attract members of the community at large into our church family. This work involves activity planning as well as promoting these and other church activities to the community.

MAC could use your help. We are always looking for fresh ideas and helping hands. We meet on the second Tuesday of every month at 6pm in Co's office. We have a hard stop at 7 pm so you will be done in an hour or less! We always welcome drop-ins, and a long-term commitment is not required. We particularly could use ideas for new activities, experts in web-based communication and promotion, as well as old school party planning.

Join in this month's meeting and try us out!

## From Our Congregation...

Corrine Bachar, of our FCC Chancel Choir, and her fellow members of the Park Ridge Chorale will present ***Broadway Revisited*** at 7:00pm on Saturday, April 12. The concert takes place at St. Luke's Lutheran Church, 205 N. Prospect in Park Ridge. Tickets can be purchased at the door or in advance (discounted) through [parkridgechorale.com](http://parkridgechorale.com). For further information, contact Corrine at 847/903-4051.







## ***FCC Pool Party***

A great time was had by all who came out for our annual all-church pool party in March, at the Prairie Lakes Aquatic Center in Des Plaines. Cold water, warm water and even a splash pad – something for everyone!

## **Have You Ever Been to our Bible Study?**

You are welcome to join us on Wednesday at 10:00am in the Barwick Room or on Zoom. We are starting a new study *Reckless Love*, by Tom Berlin. The study explores the teachings of Christ, emphasizing the importance of understanding not just his words but also his actions and journey. Jesus is portrayed as a teacher who is always in motion, engaging in experiential learning by interacting with various people and situations. His disciples learn through their journey with him, encountering outcasts, Gentiles, Roman soldiers, and others. Jesus' approach to teaching involves demonstrating love and compassion in action, challenging his followers to love their neighbors as themselves. The study highlights the concept of "reckless love," which pushes boundaries and encourages taking risks to love as God commands. The author aims to provide practical steps for readers to live out the Great Commandment through chapters that form an acronym: "Be Love." **B**egin with Love, **E**xpand the Circle, **L**avish Love, **O**penhearted Love, **V**alue the Vulnerable, and **E**mulate Christ. Please see Notes from Co for a link to the discussion material or speak with Rev. Co for details.

## **Creative Conversation Welcomes All for Lively Discussions**

Creative Conversation is FCCDP's book club. It meets once a month, on the second Monday of each month, in the Barwick Room for about an hour. All are welcome. Each member of the group has the option of reviewing a book of her/his choosing, which others can read from the library (ordered ahead), audio book or on a tablet. The choice is the reviewer's and every genre is open for discussion. Reviewers may choose their own patterns for the review, which will ultimately involve opening the discussion to the others present. There have been some really powerful discussions in the past. The **April 14** selection is *Horse* by Geraldine Brooks. **We will meet at 11:00 a.m.** Whether you've had a chance to read the book or not, we hope you'll join us for what we expect to be a lively discussion.

## **Mission & Outreach Ministry**

### **April Update from Our Backpack Ministry**

A very great big thank you to the congregation for donations up to these last two months of the 2024-2025 school year. Looking forward to the last delivery on May 29, we actually have very few items on our needed list. For the weekly supplies we are down to requiring only: boxes of macaroni and cheese [66 will finish the year], condensed child-friendly soup [26 will get us to Summer], beef stew or similar [chili, hash, chunky soup — 20 cans], canned kidney beans [ $\pm$ 16 oz. cans; only need 11 cans], and 30 pudding cups. Anything beyond what we need this year will be saved for next school year or donated to the food pantry (depending on Best Buy date), so feel as generous as you wish. We now have plenty of one gallon plastic bags; many thanks for all of you who made donations. Questions? Contact Lowell Handy at [handytreesh@att.net](mailto:handytreesh@att.net).

### **Save the Date!**

Our church once again will be represented in the annual *Relay for Life* to benefit the American Cancer Society. This year's local event will be held on June 13 in Palatine. "Through the combined efforts of all of you, our team last year was able to reach a new level by raising \$7,329 and placing second among participating teams for fundraising," said FCC team captain Paul Schmitt. Fundraising begins in April for the 2025 relay. Watch future Tidings and Notes from Co for more information or speak with Paul Schmitt for details. A reminder that any check donations should be made out to the American Cancer Society.

### **Drivers Sought**

Our church's next turn to deliver Meals on Wheels to local shut-ins runs from April 21 to May 16. If you can help with this important ministry or to learn more, please speak with Richard Schacht.



## Music Ministry



Our Wholly Ringers Handbell choir features (l to r) Barbara Brodsky, Max Alde, Anita Donoghue, Rhonda Yost, Jackie Schmitt, Paige Alde, Ellen Alde, Dave Alde, Deb Alde and Brent Anderson. Not pictured are Lydia Wetendorf and Alex Chen.

### Choirs Join Forces for Spring Concert

Our Wholly Ringers Handbell choir, under the direction of Ellen Alde, will host its annual Spring Concert at church on Sunday, April 6 at 6:00pm. This year's concert theme is *CORNUCOPIA of MOVIE and TV theme songs*.

The Wholly Ringers will be joined by our Chancel Choir, under the direction of Jamey McDunn. Accompanist is Anna Kovalevska.

There is no charge; a free will offering will be collected.

A little background about the choir. Have you ever wondered how the current bell choir came to be known as the Wholly Ringers? The Wholly Ringers originally started as the Adult Handbell Choir from 1980 to 1992, under the direction of Irene Alde. In 1993 our current director, Ellen Alde, took over the responsibilities of directing and combining the three handbell choirs - Adult, Children and High School - into one choir. Our current intergenerational choir is composed of eleven ringers, with more than 100 years of ringing experience. This year's concert marks the 26<sup>th</sup> year of providing handbell concerts for your pleasure.

***Please bring your favorite dish to share and plan to join us before the concert for a 5:00pm potluck supper.***

## Property Ministry



Our first-ever Game Night was hosted by the Property Ministry in March and offered a huge variety of board games, card games and more. Special thanks to Roger Alde for coordinating. (Additional photos next page)





***FCC Game  
Night in  
Brehm Hall***



# Finance Committee

## Financial Report

For the month of February, our church had income of \$18,833 and expenses of \$31,489. This is a shortfall for the month of \$12,656. Year-to-date, we are running \$10,838 in the red. We will be accessing funds available to us from the Church Foundation, as well as previous year's surpluses to help us erase that deficit. Thank you to all of our church members and friends for your ongoing support of FCCDP.

## Automate Your Giving with ACH

Many church members have come to appreciate the convenience of electronic giving for their pledges and offerings. The like the comfort of knowing that even if they are not able to attend worship, their contribution is still available to further God's work in our church and community. Through ACH, you can schedule your regular offering to be paid via electronic transfer from your bank checking or savings account, on a monthly, bi-monthly, or weekly basis. It's easy to get started! Just contact our Eliud Alvarez or the church secretary for more information.

## Budget Requests Due

All Ministries are reminded that budget requests for the upcoming fiscal year are due by April 25. Please review your expenses from the current year, consider your plans and goals for the coming year, and email your budget request to [surry1024@comcast.net](mailto:surry1024@comcast.net), to assure that funding for your ministry is included in the budgeting process.

## Annual Stewardship Drive Begins

The theme of this year's Stewardship Drive is "Living our Faith through Service." If that sounds familiar, it should. Living Our Faith Through Service is our church's new Mission Statement. It felt only appropriate that we use it as the theme of our Stewardship Drive, because it is your gifts to the church - gifts of your time, your talents, and your resources - that allow us to *serve* our fellow church members, the community, and those in need both near and far.

- *We serve our church members and friends* through Rev. Co's thought-provoking sermons, through beautiful and inspirational music, through our Sunday School, through our youth PF program, through shared fellowship, and so much more.



Living Our Faith Through Service



- *We serve the community* through the Backpack Ministry, our support of the Self-Help Closet & Pantry, by making our building available to the Boy Scouts and various 12-step programs, by hosting the Preschool.
- *We serve those in need, both near and far*, through Project Survivor, our support of the Night Ministries, our contributions to many other charitable groups, and our support of the UCC's various disaster relief efforts.

None of this could be accomplished without your support!

Over the next several weeks, you'll be hearing special Stewardship Messages during worship and you'll receive Stewardship information in the mail. We ask that you take some time to prayerfully consider the many ways we Live our Faith through Service. And then, consider how much more we can accomplish when we all give as we are able - of our time, our talents, and our financial resources.

### **Spring Bake Sale This Month**

Just in time for the Easter holidays, the FCCDP Spring Bake Sale is now underway. If you're looking for Easter treats or just yummy baked goods, this sale is for you! Order forms are available on the church website, through Co's Notes, or on the credenza outside the church office. To place an order, contact Garrett Pittman at [gpittman7@gmail.com](mailto:gpittman7@gmail.com) or by phone at 847-404-7635. Orders will be accepted through noon on Sunday, April 6, with pick up after worship on Palm Sunday, April 13.

### **Countdown to “The Sale” is Underway!**

Our *Second Time Around* sale date of May 3 is rapidly approaching. STA March drop-off **dates** for April: **Wednesday, April 9 and Wednesday, April 16** from 10:00am to 11:00am. NO SUNDAY DROPOFF this month

- First and foremost: Thank you to those who have donated treasures and memories for the May 3, 2025 sale and for labeling those items, especially bed linens. Thank you to those who have turned in their volunteer forms. Keep up the GREAT work!
- **TOYS!!! We are in need of gently used toys.**
- **VOLUNTEER FORMS** are available on the credenza outside the Church Office. If you would like to use the online version, please send me an email and I will return the favor with the Volunteer Form link (also in Co's Notes). We need the forms [paper or online version] **returned to the office by April 20 as I need to order workers' meals by April 22.** If you have family, friends or neighbors that would like to help at the sale then by all means give them a copy of the form.

- We will also be in need of baked goods. These can be dropped off on Thursday night **(5/1)** or Friday morning **(5/2)**. Faith and her team will sort and price. Please label if they contain nuts, are gluten free or calorie free.
- We are taking SMALL furniture (**MUST fit in your car**). If you have larger furniture (indoor or outdoor) you can start bringing that to the church April 28.
- Don't forget that volunteers get to shop early (Thursday, May 1 6:00pm to 7:30pm) Chairs shop at 5:30 pm.
- That is all for now. Look for further information in Notes from Co or on Sunday mornings.

*If you have any questions, please contact Ellen at ealdefccdp@gmail.com. Thanks so much for your continuing support. Be safe.*

### **Save the Date...**

FCCDP's 2025 Craft & Market Day will be held on **Saturday, September 27**. Mark the date on your calendar. You'll hear more about this Annual Church Fundraiser over the coming months. We expect to begin accepting table reservations from crafters and other vendors in early June.

### **Got Books?**

Creative Conversation's book sale in Webster Hall is underway, and book donations are welcome. Your books, CD's and DVD donations are needed to make this fundraiser a success. No encyclopedias or technical books, please! The books can be placed on the right side of the stage. All the books that are not sold will be donated to our STA Sale. For details contact Katy Berman.

### **FCCDP Preschool**

Preschool is having a Dine and Share fundraiser at Charcoal Delights on Oakton Street on Thursday, April 10. 4-8PM

## Happy Birthday to You!!

Congratulations to the following church members/friends on their birthdays!!

***If you would like to add/remove a birthday, please contact  
the Church Office at 847/299-5561.***

Anna Lodewyck	02-Apr
Sharon Urry	02-Apr
Jason Schacht	04-Apr
Bill Meincke	06-Apr
Quinn Yost	07-Apr
Alex Liston	08-Apr
Brian Cameron	09-Apr
Jenna Cooper	16-Apr
Rick Johnson	18-Apr
Don Cameron	26-Apr
Zaphillia Yost	26-Apr

## **From our Historian, Nancy Meyer    Original article - The Tidings 11-2-09**

Again, extracts from our 1969 Centennial Book: During the late 1920's the nation was enjoying great prosperity. Des Plaines was in the midst of a building boom with a rapid expanse in population...a new theater at corner of Miner and Lee Streets and a new 3-story Masonic Temple building across the street. In this building were numerous stores and offices as well as an auditorium for dances and theatrical plays. At Ellinwood and Lee, the Des Plaines State Bank had recently moved to its new building. The residential area of town was spreading south toward Oakton Street and west beyond the Soo Line RR.

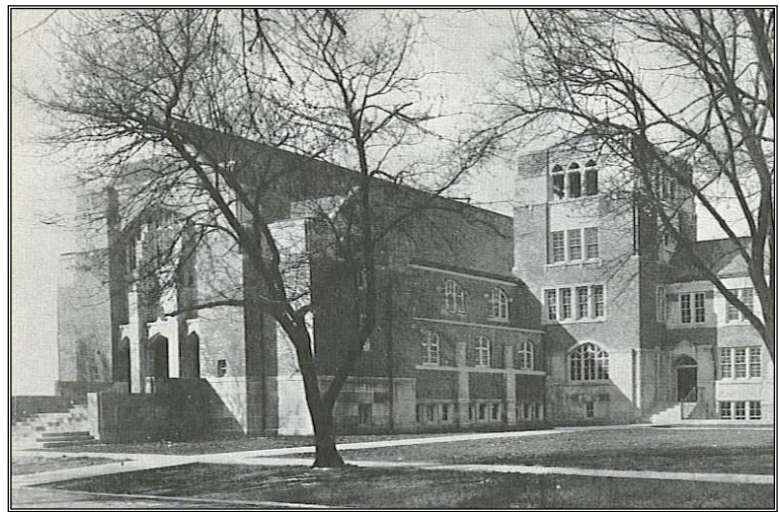
Church membership on April 1, 1927 was 284 and was increasing at such a rapid rate the 12-member Board of Trustees (chosen carefully for their variety and diversity of skills, some with financial/ legal/ real estate background; others in building/maintenance trades) recommended a building program for a new church. Eighteen months later membership was 434, and ground breaking ceremonies took place on September 28, 1928. At that time, approximately \$275,000 financing for the new building was in pledges, bond issue, loans, current real estate and money already paid into the building fund. The corner stone was placed on Dec. 2, 1928. The last service in the old church was Oct. 27, 1929 and the dedicatory services in our new church were held on Sunday, Nov. 3, 1929, just 13 months after groundbreaking!! The total cost of the new church, furnishings, memorials and land was estimated to be \$289,000. The population of Des Plaines at this time was about 8,800. Church membership at this date stood at 536. This is all just sixty years since our church was chartered in 1869 with 13 members!!

The great economic crash in October 1929, followed by years of depression, thwarted the financial planning of its builders. It took many many years and many many hours of hard work by many church members, under the guidance of professional fund raisers, to finally pay off outstanding debt.

As we recognize the 80<sup>th</sup> anniversary of the dedication of our church building, please take a look at the custom framed collage of photos of the construction of our wonderful building which is now hanging just to the right as you enter Webster Hall. It was suggested we take it apart to re-write the faded descriptions and have it re-framed. Instead the wording is now posted in a separate frame, hopefully more legible!

***See photos next page***





# April 2025

Sunday	Monday	Tuesday	Wednesday	Thursday	Friday	Saturday
<b>Fundraisers:</b>		<b>1</b>	<b>2</b> 9:00a WWC 10:00a Bible Study	<b>3</b>	<b>4</b>	<b>5</b>
<b>6 Communion – Lent 5</b> 9:00am Worship 10:00am Fellowship 10:30a Sunday Brunch Confirmation Class	<b>7</b>	<b>8</b> 12:00p Administrative Staff 6:00p Membership & Communications 7:00p Worship Ministry	<b>9</b> 9:00a WWC 10:00a Bible Study 10:00a STA-Drop-Off	<b>10</b> 6:00p Celebration of Hope	<b>11</b>	<b>12</b>
5:00p Potluck and 6:00p Bells Concert	7:00p Wholly Ringers		6:00p PRC 7:00p Chancel Choir			
<b>13 Palm Sunday</b> <b>Easter Egg Hunt</b> 9:00am Worship 10:00am Fellowship Chancel Players STA-Drop-Off	<b>14</b>	<b>15</b>	<b>16</b> 9:00a WWC 10:00a Bible Study	<b>17</b> 7:00p Maundy Thursday Service	<b>18</b>	<b>19</b>
	7:00p Wholly Ringers 7:00p Finance		7:00p Chancel Choir			
<b>20 Easter</b> 9:00am Worship 10:00am Fellowship Confirmation Class	<b>21</b>	<b>22</b>	<b>23</b> 9:00a WWC 10:00a Bible Study	<b>24</b>	<b>25</b>	<b>26</b> 8:30a STA-Sale Set-Up
<b>Titings Deadline</b>	6:30p Property 7:00p Wholly Ringers	7:00p Council	7:00p Chancel Choir			
<b>27 Confirmation Class conducting worship</b> 9:00am Worship 10:00am Fellowship	<b>28</b>	<b>29</b>	<b>30</b>			
2:00p STA set-up	STA-Sale Set-Up	STA-Sale Set-Up	STA-Sale Set-Up			

**First Congregational United Church of Christ**

766 Graceland Avenue, Des Plaines, Illinois

[www.fccdp.org](http://www.fccdp.org)

847/299-5561